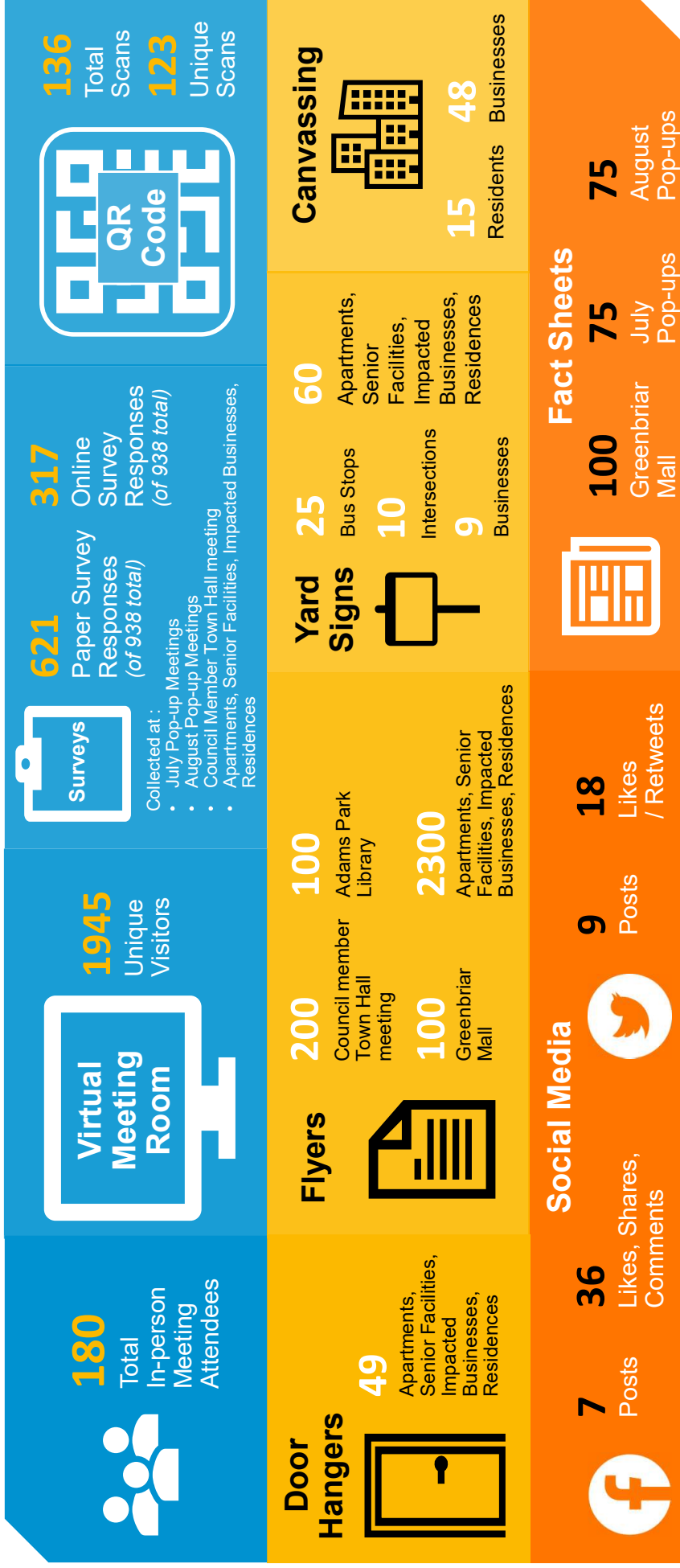


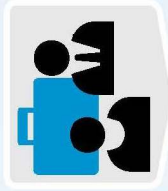
Review of Most Recent Public Engagement



Who Participated in the Survey?



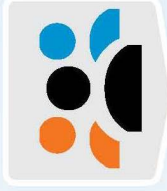
The **three top** survey responders' categories were responders who are:



Employed



Commuters



Retirees

45%
Prefer BRT (421 of 938)



43%
Prefer LRT (405 of 938)

About 10% (98 of 938) prefer other modes

Modes of Transportation

850 participants,
or about **90%**

advocated for:



Wider/better
sidewalk
conditions



Separated
bike lane/
cycle tracks



Multiuse bike/
pedestrian
paths



Addressing
existing
issues